

# Our Work in the South West

## Local Area Committee

**Marta Alfaro Tirado, Nature Recovery Manager (South)**  
Sheffield & Rotherham Wildlife Trust

[wildsheffield.com](http://wildsheffield.com)

# Who we are

Throughout Sheffield & Rotherham, from our **streets & neighbourhoods** to the wider **countryside**, there will be an **abundance** of nature that is protected, cared for and **experienced** by everyone

# Who we are



## Creating a Network for Nature

We take care of 15 nature reserves across Sheffield and Rotherham.



## Connecting People with Nature

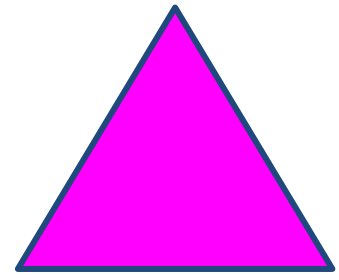
We connect people with the natural world through innovative programmes.



## Taking Action for Nature and Wildlife

We campaign for a better deal for nature and inspire people to take action in their own lives.





# Nature Reserves

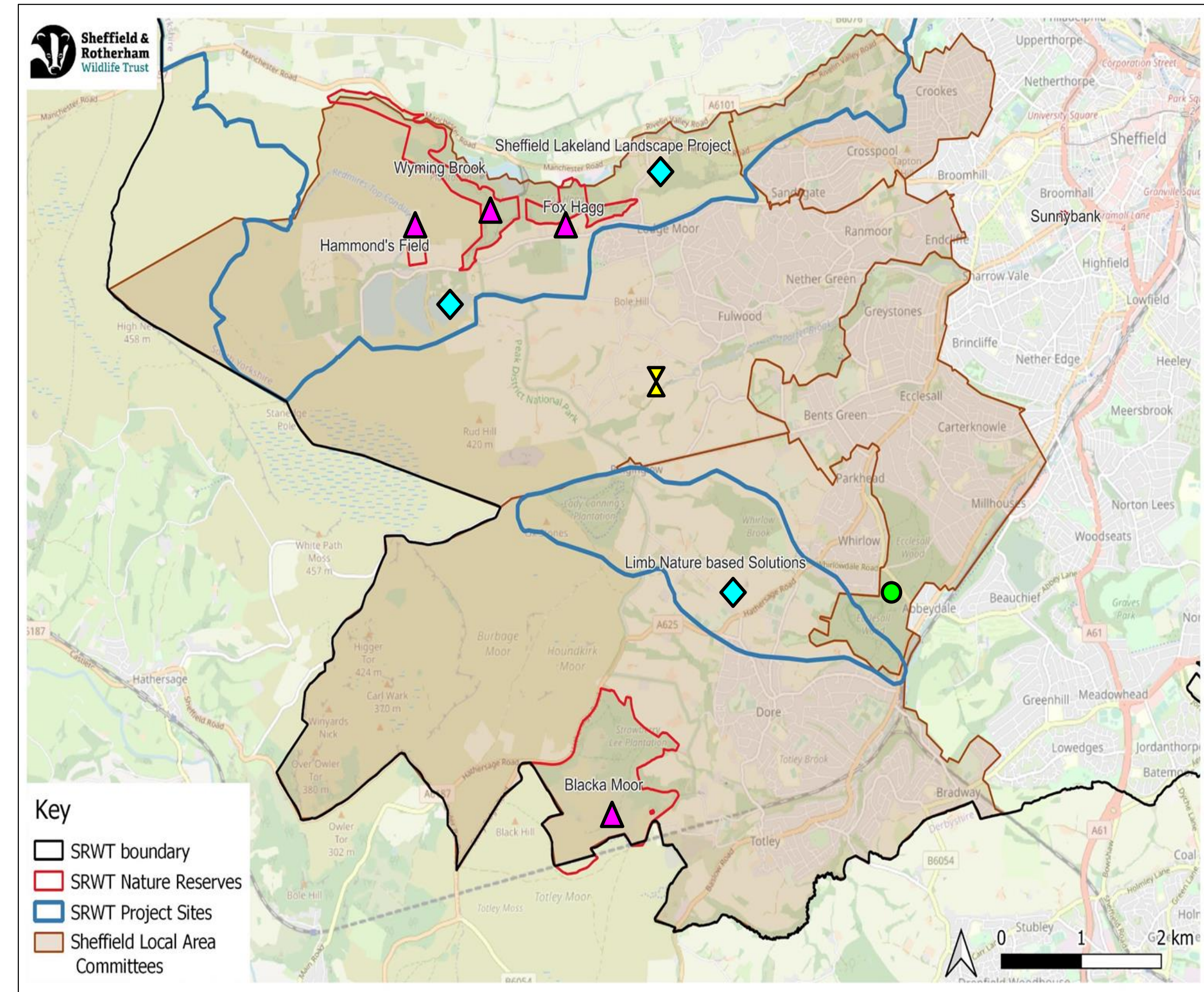
- Blacka Moor
- Hammond's Field
- Wyming Brook
- Fox Hagg



Viviparous lizard at Blacka Moor © Elaine Barber

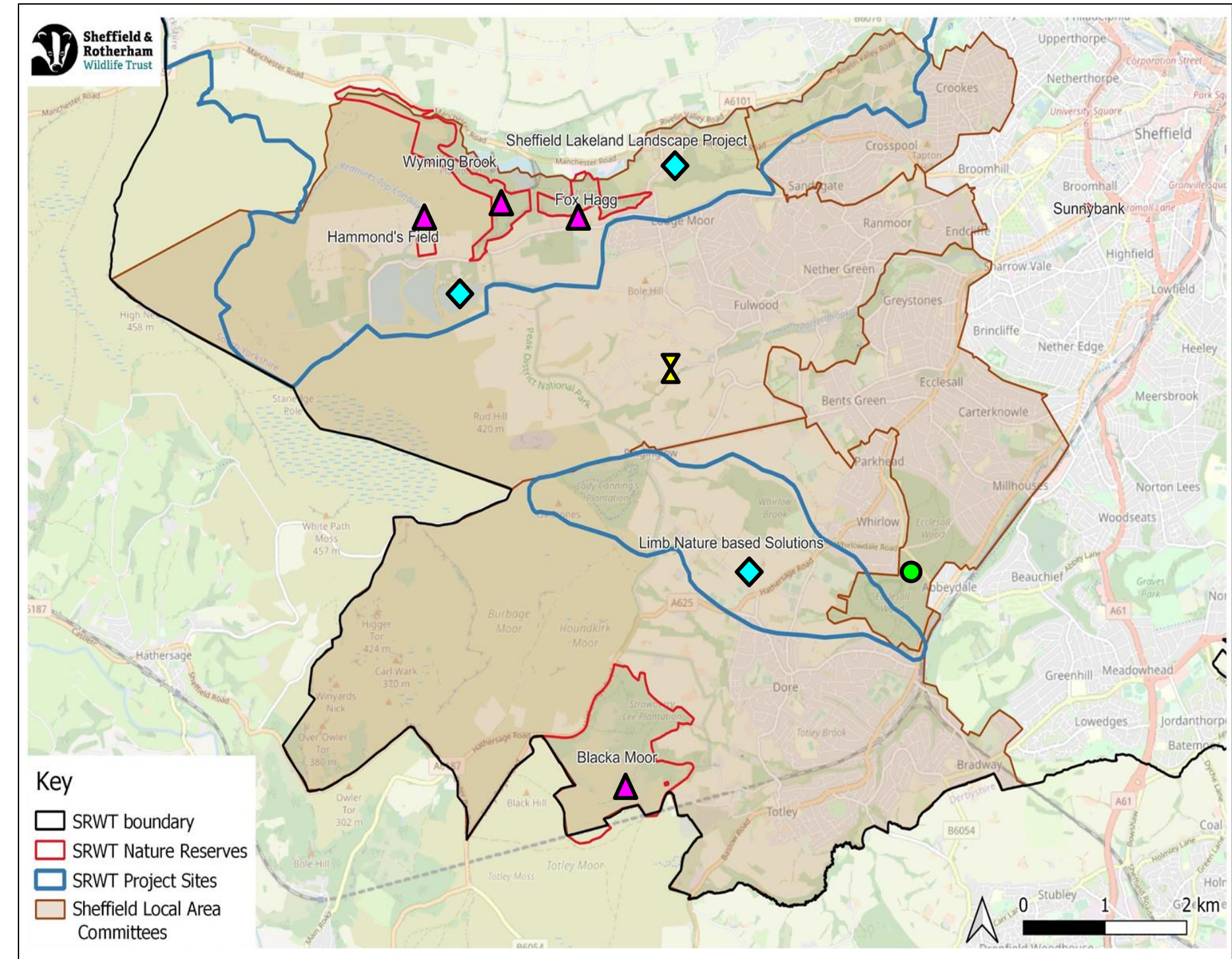


Volunteers building a dead hedge at Wyming Brook © Marta Alfaro



# ◆ Partnership work

- Sheffield Lakeland Landscape Partnership (SLLP)
- Redmires
- Limb Brook NbS Demonstrator



Water Vole © Tom Marshall



Leaky dams in Limb Brook © Rob Jones



# Outdoor Learning

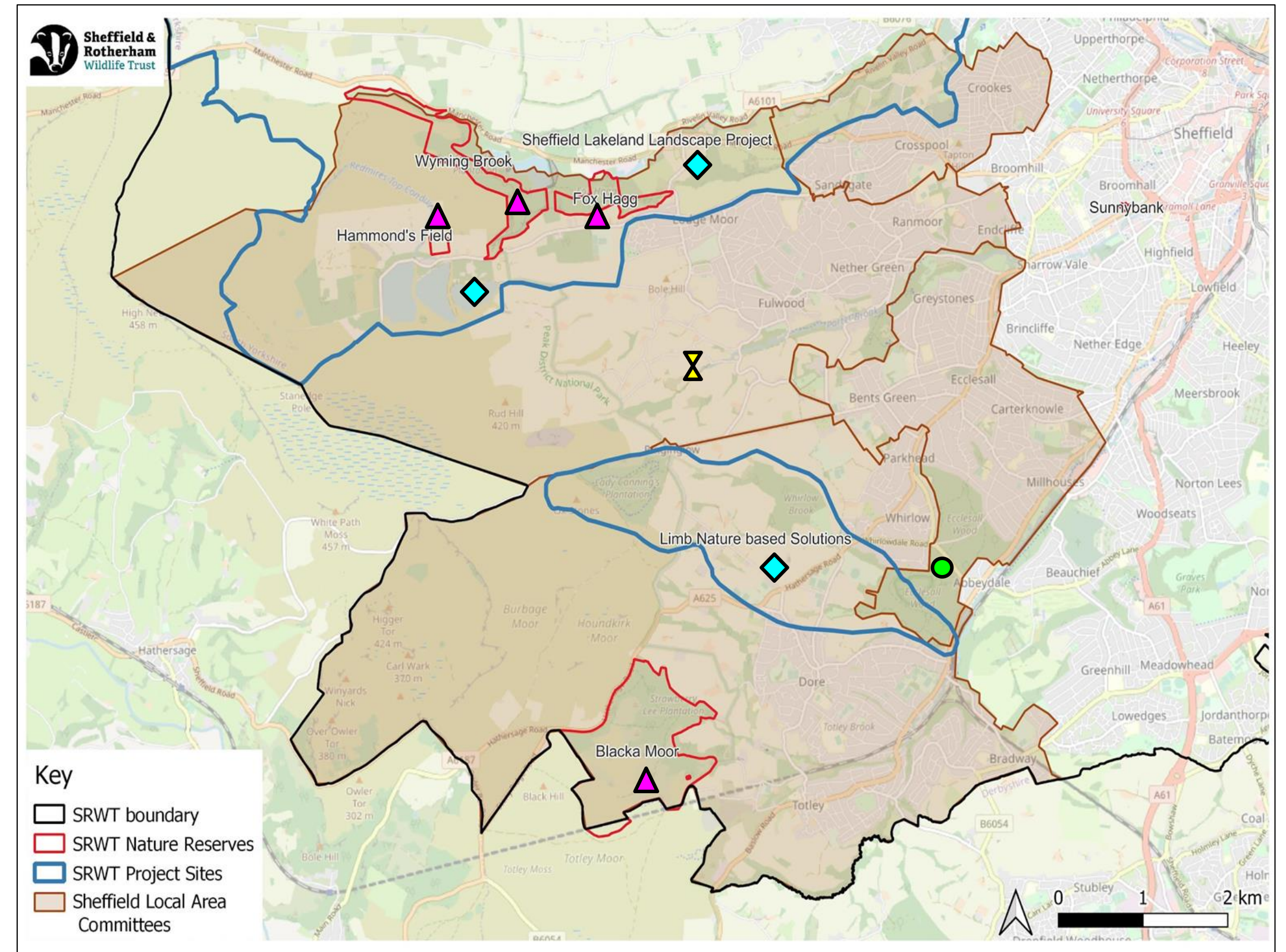
- School Sessions
- Wild Play



Outdoor Learning at our Nature Reserves  
© HD

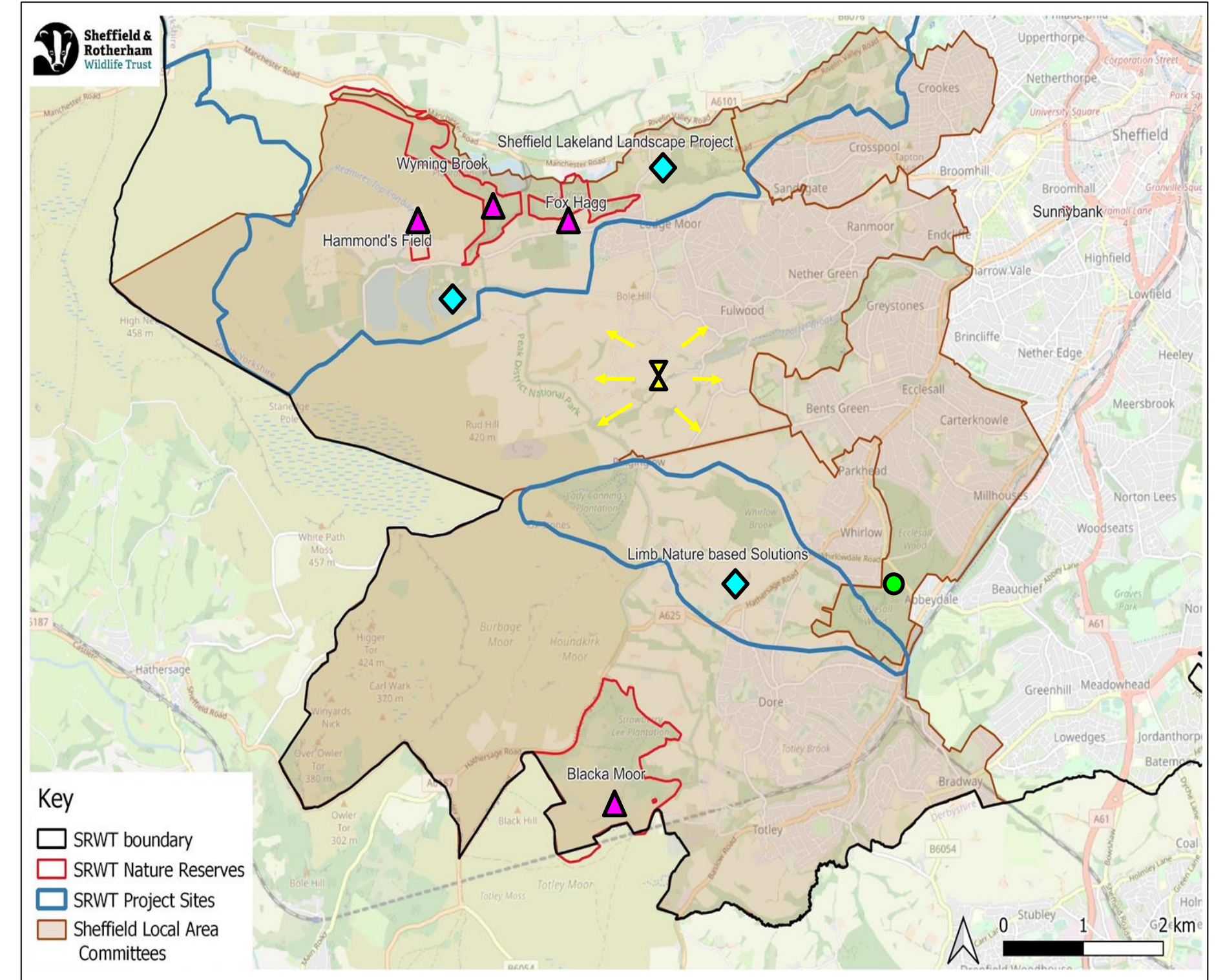
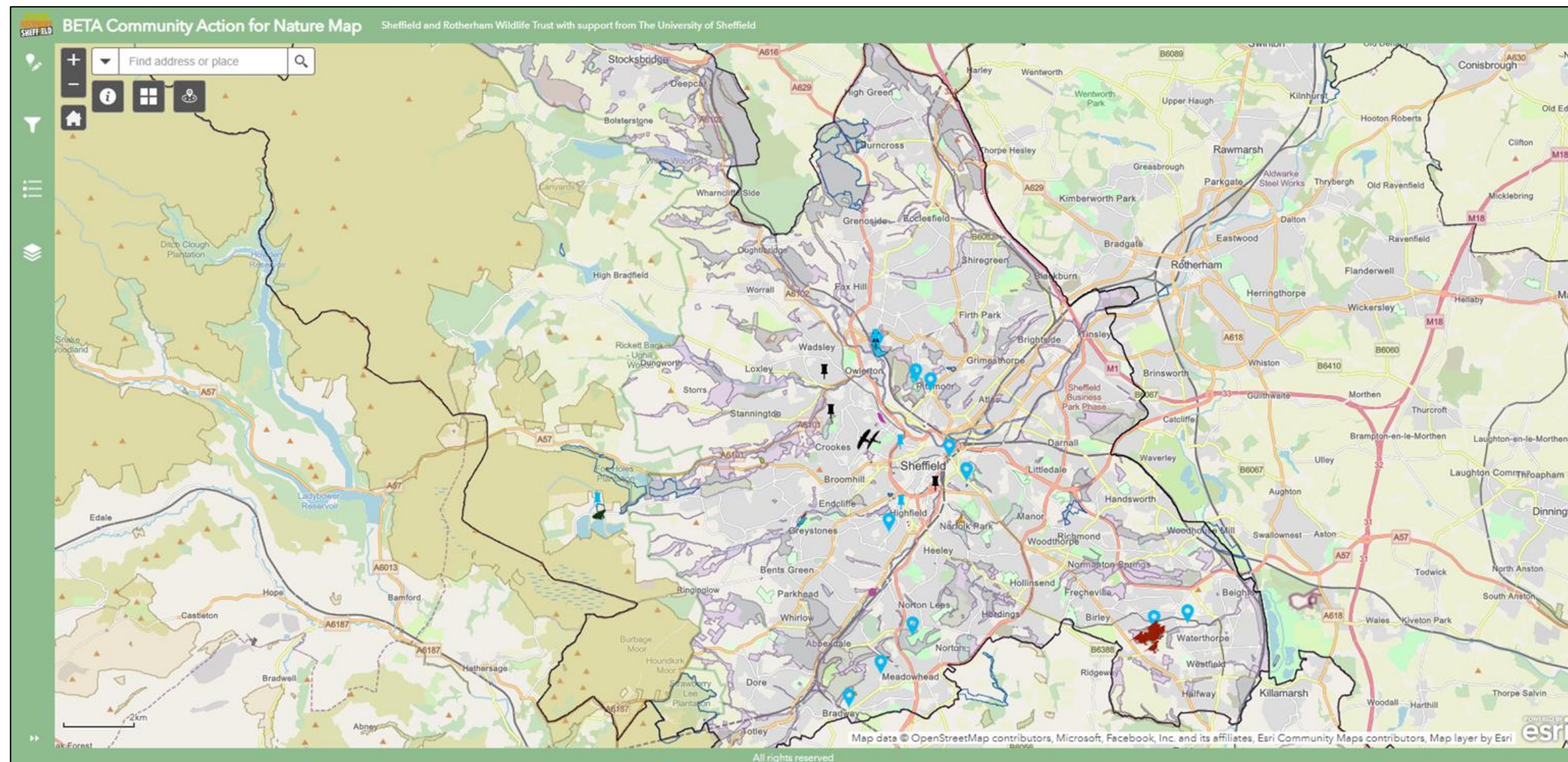


School Sessions © Helena Dolby



# Nature Recovery Sheffield

## Community Action for Nature Map





# New projects



**Sheffield &  
Rotherham**  
Wildlife Trust

- Land Management Advice Service
- Our offer to young people
  - Development of a plan focused on young people
  - Working on a partnership with South West Local Area Committee (SW LAC) and the Youth Service
  - Blacka Moor practical conservation work tailored to younger people

# Thank you

 Sheffield & Rotherham Wildlife Trust

 wildsheffieldandrotherham

 WildSheffield

[wildsheffield.com](http://wildsheffield.com)